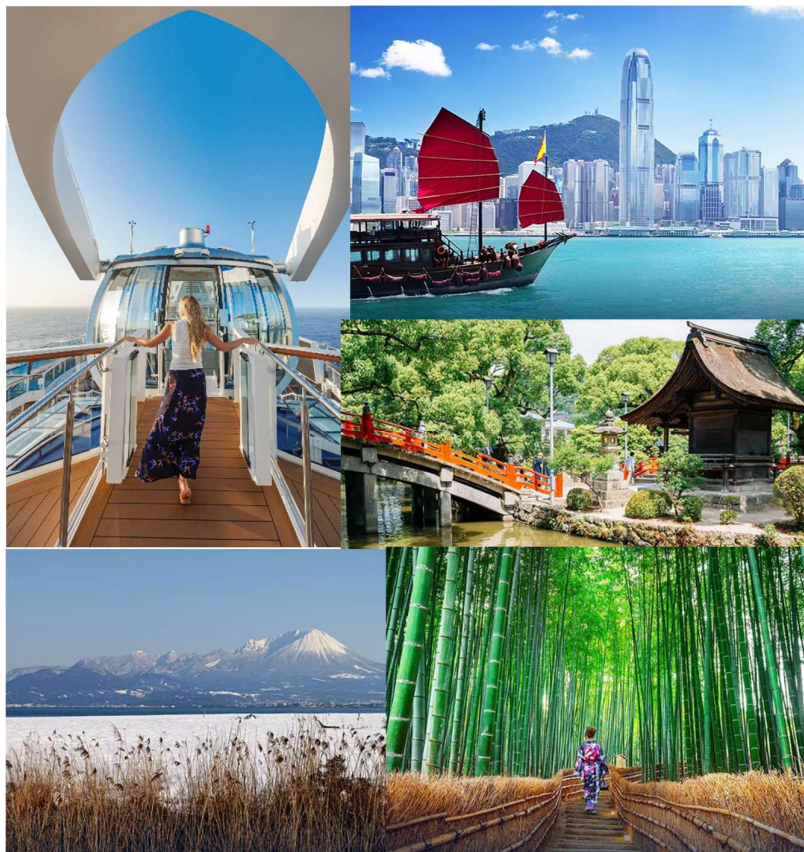


## 11 Nights Hongkong to Tokyo Cruise ( Spectrum of the Seas)

| DAY   | PORT (23NOV-04DEC)   |
|-------|--|
| 1     | Hong Kong, China<br><i>Departs at 4:00 PM</i>  |
| 2-3   | Cruising<br><i>Day at sea</i>  |
| 4     | Fukuoka , Japan<br><i>From 8:00 AM - 7:00 PM</i>   |
| 5     | Sakaimitato , Japan<br><i>From 8:00 AM - 7:00 PM</i>   |
| 6     | Kyoto (Maizuru),Japan<br><i>From 8:00 AM -5:00PM</i>   |
| 7     | Kanazawa, Japan<br><i>From 8:00 AM - 7:00 PM</i>   |
| 8     | Cruising<br><i>Day at sea</i>  |
| 9     | Sasabeo, Japan<br><i>from 8:00 AM - 6:00 PM</i>  |
| 10-11 | Cruising<br><i>Day at sea</i>  |
| 12    | Hong Kong, China<br><i>Arrives at 6:30 AM</i><br><i>*Port sequence may vary by sailing date.</i> |



### ***Fly-Cruise with 1N hotel at Hong Kong***

22Nov - SINGAPORE TO HONG KONG BY SQ892 0955/1355

*Arrival Pick up to Hotel*

*Hotel : Standford Mongkok or Standford Hillview or similar*

23Nov – *Pick up to Port for cruise check in*

04Dec – *Pick up to Hong Kong Airport SQ893 1545/1950*

Adult Twin: from **\$4598** per person (Ocean View Balcony)

3<sup>RD</sup> OR 4<sup>TH</sup> pax \$4188 per person

Price includes airport taxes, port taxes and gratuity

Price excludes travel insurance, shore excursion, visa if any



Cruise Itineraries

Spectrum of the Seas March to December 2025 Sailings

| Departure Date               | Itinerary | Ports of Call                               |
|------------------------------|-----------|---|
| Shanghai Round Trip Sailings |           |   |
| 2025 Mar 5                   | 4-Night   | Nagasaki                                    |
| 2025 Mar 9                   | 7-Night   | Osaka (Overnight) – Kobe – Tokyo (Yokohama) |
| 2025 Mar 16                  | 4-Night   | Fukuoka                                     |
| 2025 Mar 20                  | 5-Night   | Fukuoka – Busan                             |
| 2025 Mar 25                  | 5-Night   | Kumamoto – Nagasaki                         |
| 2025 Mar 30                  | 5-Night   | Okinawa (Naha) – Ishigaki                   |
| 2025 Apr 4                   | 4-Night   | Fukuoka                                     |
| 2025 Apr 8                   | 5-Night   | Kumamoto – Fukuoka                          |
| 2025 Apr 13                  | 4-Night   | Okinawa (Naha)                              |
| 2025 Apr 17                  | 5-Night   | Nagasaki – Fukuoka                          |
| 2025 Apr 22                  | 4-Night   | Fukuoka                                     |
| 2025 Apr 26                  | 5-Night   | Nagasaki – Kagoshima                        |
| 2025 May 1                   | 4-Night   | Okinawa (Naha)                              |
| 2025 May 5                   | 5-Night   | Kagoshima – Kumamoto                        |
| 2025 May 10                  | 4-Night   | Fukuoka                                     |
| 2025 May 14                  | 4-Night   | Okinawa (Naha)                              |
| 2025 May 18                  | 5-Night   | Kumamoto – Kagoshima                        |
| 2025 May 23                  | 4-Night   | Fukuoka                                     |
| 2025 May 27                  | 4-Night   | Okinawa (Naha)                              |
| 2025 May 31                  | 4-Night   | Okinawa (Naha)                              |
| 2025 Jun 4                   | 4-Night   | Nagasaki                                    |
| 2025 Jun 8                   | 7-Night   | Kobe (Overnight) – Osaka – Tokyo (Yokohama) |
| 2025 Jun 15                  | 4-Night   | Fukuoka                                     |
| 2025 Jun 19                  | 5-Night   | Kagoshima – Nagasaki                        |
| 2025 Jun 24                  | 5-Night   | Kumamoto – Nagasaki                         |
| 2025 Jun 29                  | 5-Night   | Busan – Fukuoka                             |
| 2025 Jul 4                   | 5-Night   | Kagoshima – Okinawa (Naha)                  |
| 2025 Jul 9                   | 4-Night   | Fukuoka                                     |
| 2025 Jul 13                  | 5-Night   | Kumamoto – Kagoshima                        |
| 2025 Jul 18                  | 4-Night   | Okinawa (Naha)                              |
| 2025 Jul 22                  | 4-Night   | Fukuoka                                     |
| 2025 Jul 26                  | 7-Night   | Kobe (Overnight) – Osaka – Tokyo (Yokohama) |

| Departure Date                | Itinerary | Ports of Call   |
|-------------------------------|-----------|---|
| 2025 Aug 2                    | 4-Night   | Okinawa (Naha)  |
| 2025 Aug 6                    | 4-Night   | Fukuoka   |
| 2025 Aug 10                   | 5-Night   | Kumamoto – Kagoshima  |
| 2025 Aug 15                   | 4-Night   | Okinawa (Naha)  |
| 2025 Aug 19                   | 5-Night   | Fukuoka – Kumamoto  |
| 2025 Aug 24                   | 5-Night   | Sasebo – Kagoshima  |
| 2025 Aug 29                   | 3-Night   | Jeju (Seogwipo)   |
| 2025 Sep 1                    | 4-Night   | Okinawa (Naha)  |
| 2025 Sep 5                    | 5-Night   | Fukuoka – Busan   |
| 2025 Sep 10                   | 4-Night   | Nagasaki  |
| 2025 Sep 14                   | 7-Night   | Kobe (Overnight) – Osaka – Tokyo (Yokohama)                 |
| 2025 Sep 21                   | 5-Night   | Nagasaki – Fukuoka  |
| 2025 Sep 26                   | 5-Night   | Kagoshima – Okinawa (Naha)                                  |
| 2025 Oct 1                    | 4-Night   | Fukuoka   |
| 2025 Oct 5                    | 4-Night   | Okinawa (Naha)  |
| 2025 Oct 9                    | 4-Night   | Sasebo  |
| 2025 Oct 13                   | 4-Night   | Okinawa (Naha)  |
| 2025 Oct 17                   | 3-Night   | Jeju (Seogwipo)   |
| 2025 Oct 20                   | 5-Night   | Nagasaki – Fukuoka  |
| 2025 Oct 25                   | 8-Night   | Jeju (Seogwipo) – Kyoto (Maizuru) – Niigata – Hakodate      |
| 2025 Nov 2                    | 4-Night   | Okinawa (Naha)  |
| 2025 Nov 6                    | 5-Night   | Busan – Fukuoka   |
| 2025 Nov 11                   | 4-Night   | Okinawa (Naha)  |
| 2025 Nov 15                   | 4-Night   | Fukuoka   |
| Shanghai to Hong Kong Sailing |           |   |
| 2025 Nov 19                   | 4-Night   | Ishigaki  |
| Hong Kong Round Trip Sailings |           |   |
| 2025 Nov 23                   | 11-Night  | Fukuoka – Sakaiminato – Kyoto (Maizuru) – Kanazawa – Sasebo |
| 2025 Dec 4                    | 5-Night   | Okinawa (Naha) – Ishigaki                                   |
| 2025 Dec 9                    | 5-Night   | Da Nang (Chan May) – Nha Trang                              |
| 2025 Dec 14                   | 5-Night   | Okinawa (Naha) – Ishigaki                                   |
| 2025 Dec 19                   | 2-Night   | Party at Sea  |
| 2025 Dec 21                   | 9-Night   | Fukuoka – Kumamoto – Nagasaki – Kagoshima                   |
| 2025 Dec 30                   | 5-Night   | Okinawa (Naha) – Ishigaki                                   |

The information in this brochure is accurate at the time of distribution (Feb 2025). In case of any changes to contents, itineraries, onboard products, restaurants, entertainment or deck plan, Royal Caribbean Cruises Limited reserves all rights of interpretation and final decision within laws and ordinances. All images featured are for reference and illustration purposes only. Royal Caribbean Cruises Limited may adjust, change or cancel the contents listed in this brochure. Please contact Royal Caribbean or your travel agents for details.

SPECTRUM OF THE SEAS



SET SAIL ON A BOLD ADVENTURE



ROYAL CARIBBEAN





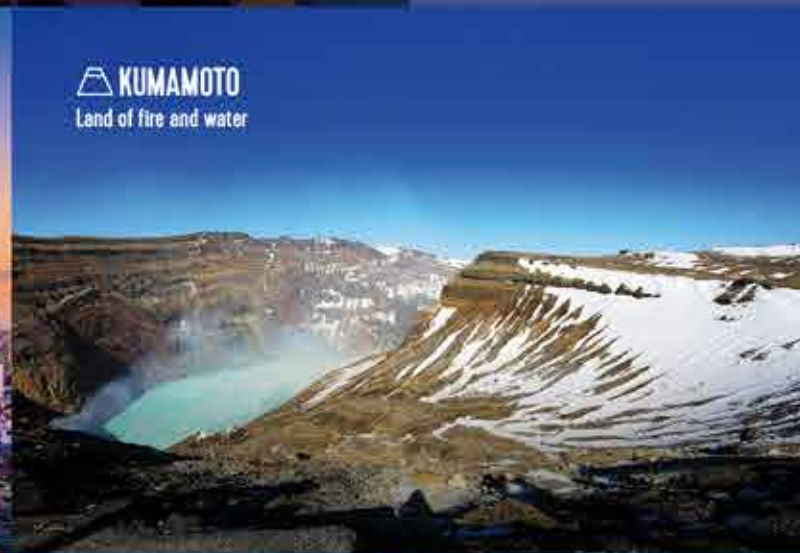
**33** TYPES OF WORLDWIDE DINING EXPERIENCES

**30+** TYPES OF EXCITING ENTERTAINMENT ACTIVITIES

**40+** DUTY-FREE BRANDS

**3** STYLES OF BROADWAY CABARET SHOWS

**4** MASSIVE INDOOR AND OUTDOOR SWIMMING POOLS



Experience the ultimate blend of luxury and exploration. Sail with the Spectrum of the Seas and uncover more than 10 exciting destinations throughout the year, including Japan, South Korea and Vietnam.

## Pioneering the future of cruising



**BEST CRUISE LINE OVERALL**  
22 YEARS RUNNING  
Travel Weekly Readers' Choice Awards

Since its founding in 1969, the Royal Caribbean Group is considered one of the leaders in the cruise industry. Headquartered in Miami, USA, and proudly listed on the New York Stock Exchange (RCL), the company oversees a portfolio of five major cruise brands. Among them, Royal Caribbean International boasts an impressive fleet of 28 luxury ships spread across seven distinct series, solidifying its position as the most influential brand within the group.

Royal Caribbean International consistently pushes the boundaries of the cruise industry with each new ship series. These groundbreaking vessels set a new standard for innovation and luxury, becoming icons that redefine the cruise vacation experience. The Icon of the Seas, which entered service in 2024, is a testament to this legacy. As the largest cruise ship in the world, it breaks the record of the Oasis-class ships which held the record as the largest cruise ship for the past 14 years. It offers an unprecedented array of amenities and entertainment options for guests.

## Spectrum of the Seas®

### Cruise Ship Customised for Asia

Come onboard *Spectrum of the Seas*®, specially designed for the Asian market! As a Quantum Ultra Class cruise ship, it has various exciting entertainment and leisure facilities, complete with multi-national delicacies, offering travellers an unforgettable experience that is beyond imagination.



**169,379**  
Tonnage



**USD \$1.25B**  
Building Cost



**1,138ft**  
Length



**135ft**  
Width



**16 Decks**  
(including 14 guest decks)



**5,622**  
Number of Guests



**1,551**  
Crew



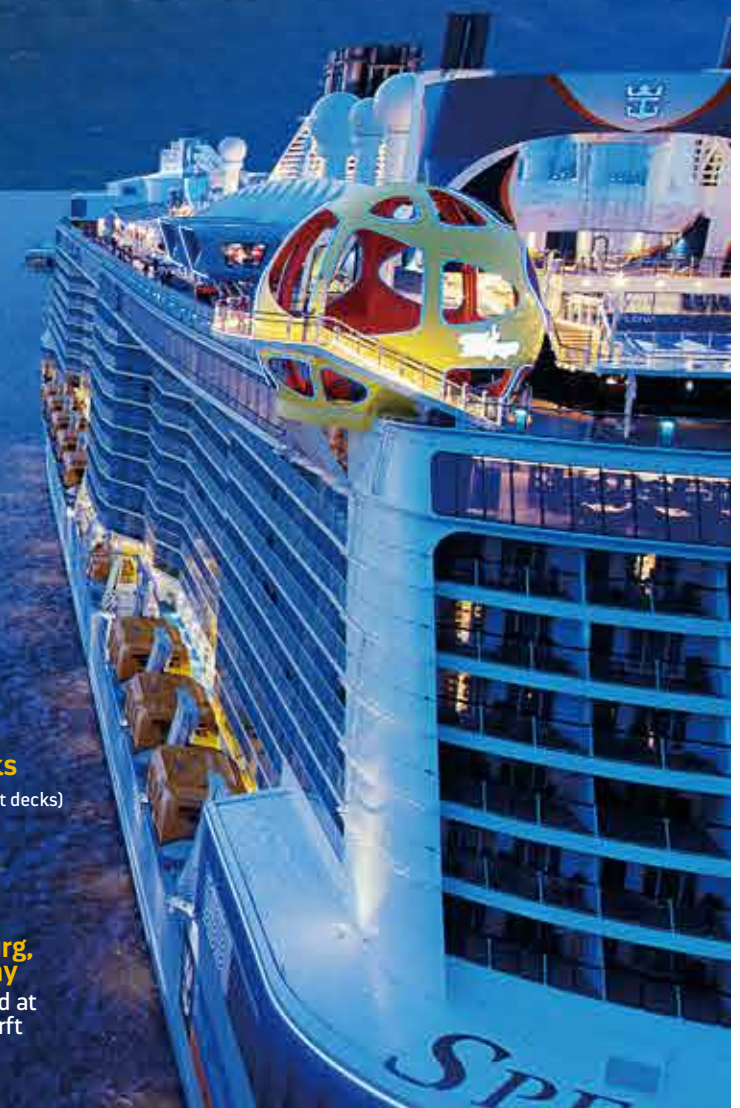
**22 Knots**  
Cruising Speed



**Apr 2019**  
Maiden Voyage

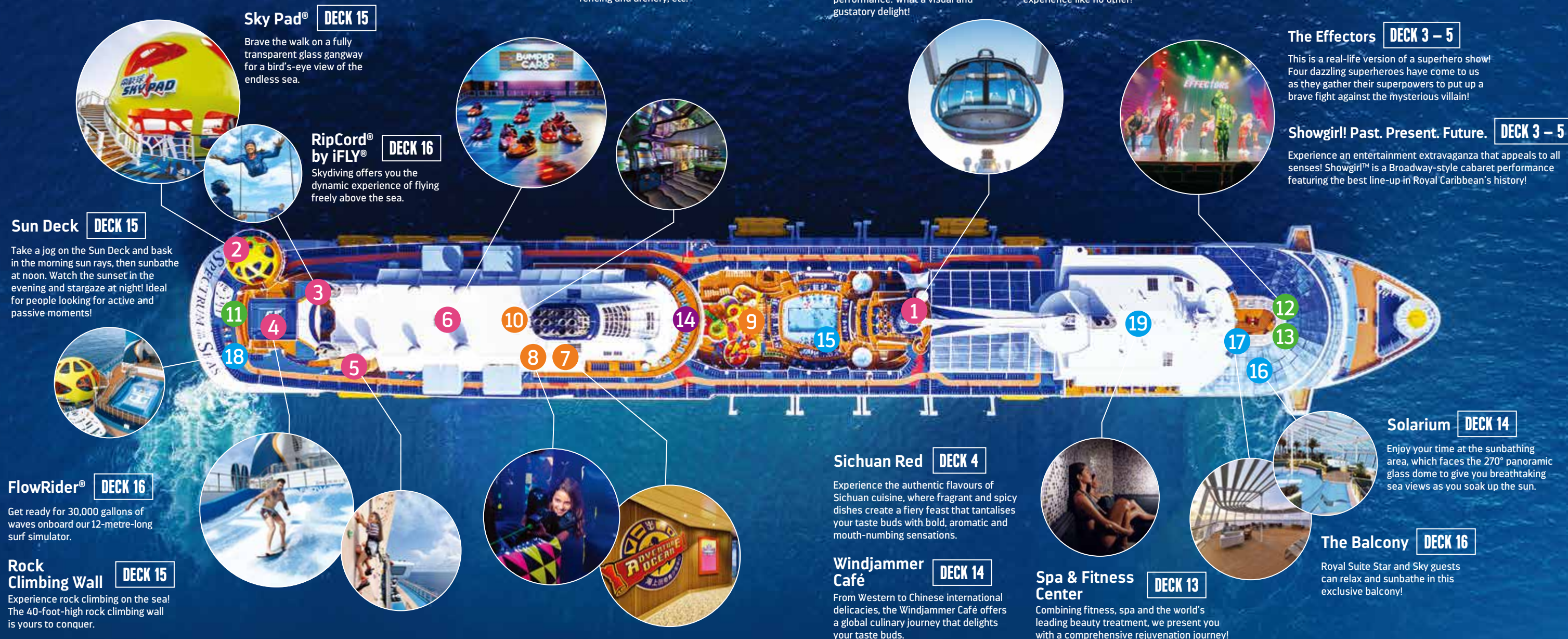


**Papenburg, Germany**  
Constructed at Meyer Werft





# Spectrum of the Seas® A Glance at the Exciting Facilities



## Extraordinary entertainment at sea that leaves you wanting more

- 1 North Star® DECK 15
- 2 Sky Pad® DECK 15
- 3 RipCord® by iFLY® DECK 16
- 4 FlowRider® DECK 16
- 5 Rock Climbing Wall DECK 15
- 6 SeaPlex® DECK 15 – 16

## Kids and teenagers must visits

- 7 Adventure Ocean DECK 11, 12, 15
- 8 Laser Tag: Battle for Planet Z DECK 15
- 9 Splashaway Bay DECK 14
- 10 Children's Video Games Playroom DECK 15

## A hall of art at sea that takes you into a new sensory world

- 11 The Silk Road (Two70 Viewing Hall) DECK 5
- 12 The Effectors (Royal Theatre) DECK 3 – 5
- 13 Showgirl! Past. Present. Future. (Royal Theatre) DECK 3 – 5

## Duty-free shopping at sea with global brands

- 14 Royal Esplanade DECK 4

## Get away from the hustle and bustle of life to enjoy the serenity at sea

- 15 Pool Deck DECK 14
- 16 Solarium DECK 14
- 17 The Balcony DECK 16
- 18 Sun Deck DECK 15
- 19 Spa & Fitness Center DECK 13



# Extraordinary Guest Rooms

Spectrum of the Seas® offers a variety of stateroom options to cater to the diverse needs of its guests, providing a revolutionary cruise experience.



33  
TYPES OF  
CAPTIVATING  
ROOMS

| Room Type                                   | Room Size (sq.ft.) | Balcony Area (sq.ft.) |
|---|--------------------|-----------------------|
| Royal Suites                                |                    |                       |
| Ultimate Family Suite*** (US)               | 2,346              | 462                   |
| Grand Loft Suite*** (GL)                    | 696                | 216                   |
| Owner's Suite ** (OS)                       | 541                | 259                   |
| Grand Suite** (GS)                          | 338                | 109                   |
| Sky Junior Suite** (JY)                     | 267                | 81                    |
| Sky Balcony** (BY)                          | 198                | 81                    |
| Junior Suite with Large Balcony* (JL)       | 276                | 81                    |
| Junior Suite* (J4)                          | 276                | 81                    |
| Balcony Room                                |                    |                       |
| Ocean View with Large Balcony (1C/2C/3C/4C) | 177                | 65                    |
| Ocean View Balcony (1D/2D/3D/4D/5D)         | 198                | 55                    |
| Connecting Ocean View Balcony (CB)          | 198                | 55                    |
| Obstructed Ocean View Balcony (1E/2E)       | 198                | 55                    |
| Studio Ocean View Balcony (2F)              | 119                | 55                    |
| Ocean View Staterooms                       |                    |                       |
| Spacious Ocean View (3M/4M)                 | 214                | /                     |
| Ocean View (1N/2N)                          | 182                | /                     |
| Interior Staterooms                         |                    |                       |
| Interior with Virtual Balcony (1U/2U)       | 166                | /                     |
| Interior (1V/2V/3V/4V)                      | 166                | /                     |
| Connecting Interior (CI)                    | 166                | /                     |
| Studio Interior (2W)                        | 101                | /                     |



Grand Loft Suite



Ocean View Balcony Room



Spacious Ocean View Family Room



\*\*\*Star Suite: 29 exclusive benefits  
\*\*Sky Suite: 20 exclusive benefits  
\*Ocean Suite: 6 exclusive benefits  
Suite guests have exclusive access to the Royal Residence. To inquire, please call the Royal Caribbean hotline or contact your travel agent.

# International Cuisines

## Main Meals Restaurants



| Name of Restaurants         | Cuisines                                   | Decks     |
|-----------------------------|--|-----------|
| Main Dining Room            | International Flavours                     | Deck 3, 4 |
| Sichuan Red*                | Sichuan Cuisine                            | Deck 4    |
| Wonderland*                 | Imaginative                                | Deck 5    |
| Jamie's Italian Restaurant* | Italian                                    | Deck 5    |
| Chops GrilleSM*             | American                                   | Deck 5    |
| Chef's Table*               | High-end Customised International Flavours | Deck 5    |
| Izumi Japanese Restaurant*  | Japanese                                   | Deck 5    |
| Teppanyaki*                 | Japanese                                   | Deck 14   |
| Windjammer Café             | International Cuisines                     | Deck 14   |
| Noodle Bar                  | Specialty Noodles                          | Deck 14   |
| Sorrento's Pizza            | Italian Pizza                              | Deck 14   |
| The Hot Pot*                | Hot Pot                                    | Deck 14   |
| Silver Dining#              | International Flavours                     | Deck 14   |
| Gold Dining*                | International Flavours                     | Deck 16   |

## Light Snacks and Coffee Dessert Restaurant



| Name of Restaurants | Cuisines                    | Decks   |
|---------------------|-----------------------------|---------|
| La Patisserie*      | Fancy Desserts              | Deck 4  |
| Leaf & Bean*        | Coffee & Tea Bar            | Deck 4  |
| The Café @ Two70    | Light Salads and Sandwiches | Deck 5  |
| Splashaway Café     | Light Snacks                | Deck 14 |
| Ice Cream Parlour   | Ice Cream                   | Deck 14 |
| Dog House           | American-style Fast Food    | Deck 15 |
| Room Service        | International Flavours      | -       |

## Bars (Not fully listed)



| Name of Restaurants | Cuisines            | Decks  |
|---------------------|---------------------|--------|
| Schooner Bar*       | Alcoholic Beverages | Deck 5 |
| Vintages*           | Alcoholic Beverages | Deck 5 |
| Bionic Bar*         | Alcoholic Beverages | Deck 5 |

\*Restricted to Royal Suite Class guests.  
\*Specialty restaurant that comes with a charge.  
• Other food and beverage establishments are available but not fully listed. Guests must be at least 18 years old to consume alcohol.  
• Content and information above may differ according to the situation on board.



American-style Steak

A wide variety of multinational cuisines are served in a palatial dining environment with friendly and attentive service to add more excitement to your dream cruise vacation.



33  
TYPES OF WORLDWIDE  
DINING EXPERIENCES



Teppanyaki Lobster